



Formosa **Model**

SL-55 Resin 3D Printer



www.formosa-model.com



3 Sec per Layer >>>>

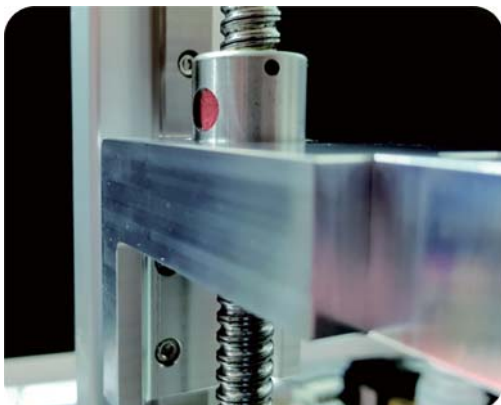
Fast / Precision Resin 3D Printer

SL-55

CLOUD RESIN LCD 3D PRINTER

High Precision 2K LCD SLA Resin Printer
47um spot

Processor	1.2GHz 4-core 64bit
Software	Nanodlp Build in
Protect Function	Carry on function Continue Printing after Power break and back
Print Area	120X60X100mm
Spot Size	47.65µm
Layer Thick	0.025mm,0.05mm,0.1mm
Print Speed	1mm / 60sec
Interface	RJ45, wifi
Z Axis Precision	0.001mm



High Level Equipment Ball Screw System

The ball screw system make 1000 times life than Tr screw



Spot Size Compare

2K LCD-SLA	47µm
SLA	100µm
DLP	100 need to adjust many times

SL55 RESIN PRINTER TOP 5 POINT

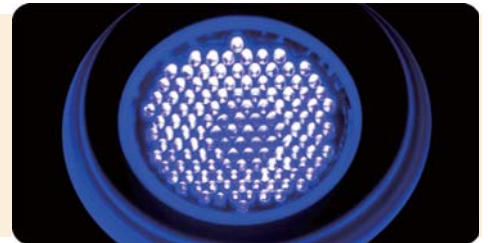
01. CROSS PLATFORM DEVICE SUPPORT
Can print via cell phone, pad ext...



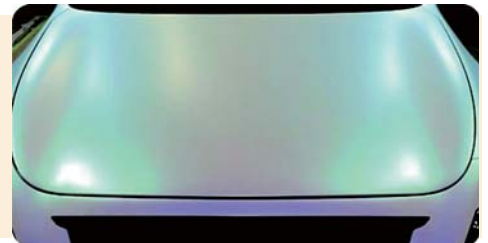
02. CARRY ON SYSTEM
Can continue print after power shutdown and back



03. 60W MATRIX UVLED
Just 3sec solid per layer
Super fast printing speed



04. CAR PAINT CASE
Make case has long life surface
better for resin and easy to clean



05. EASY COVER DESIGN
easy to open/close



PRINT
SAMPLES





Formosa Model



No.3-26, Guoyihou, Liuying Dist., Tainan City 736, Taiwan



sales@formosa-model.com



+886-6-6235105